

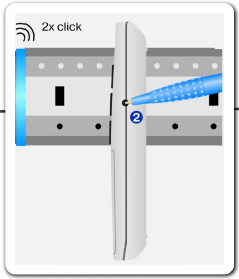
Turn Power On
240V 50Hz

Default Clean Factory
Motor

Motor now in radio
learning mode for 3
minutes

See flow chart: For
programming already
setup PSF / PSF+
motor

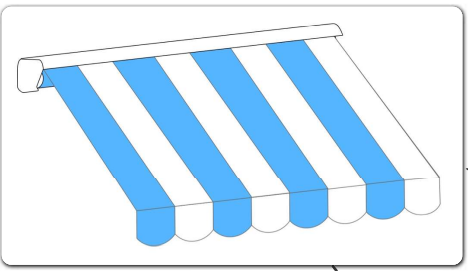
Press & hold program button
on transmitter for 3 seconds
(Note: If multi channel remote
select channel first)



Motor makes "Click"
Click" sound.
Confirming that
master remote
channel is now
recorded

Is direction of
rotation correct (Down
button should extend
the awning)

Slide direction switch
to other position (Grey
switch located on
motor head)



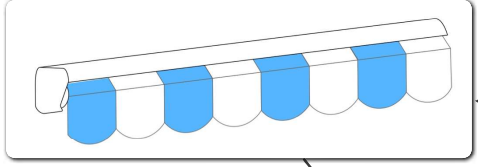
Press the down button
on the remote to
extend the awning to
the desired outer limit

Rotation direction is
now changed and
correct



Press & hold the
program button then
the down button
together for 3 seconds

Motor makes a "Click"
sound. Confirming that
the outer limit is
recorded



Press the up button
on the remote to retract
the awning to the
desired inner limit



Press & hold the
program button then
the up button together
for 3 seconds

Motor makes a "Click"
sound. Confirming that
the inner limit is
recorded

Both limits are now recorded
Check correct operation