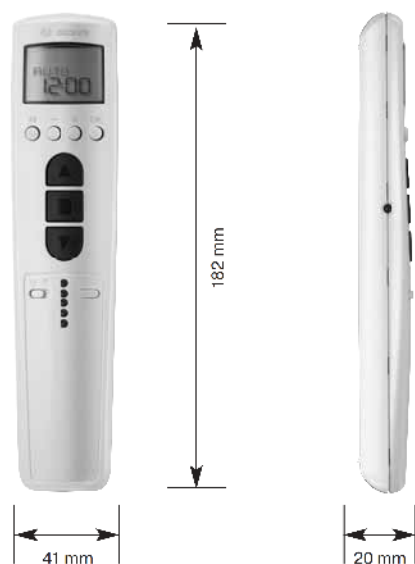


Sun-wind-control in handheld transmitter with display

Centronic SunWindControl SWC545A-II



5-channel handheld transmitter with integrated automatic wind protection and sunshade function. Used to control radio-operated drives for sun protection systems and radio receivers (individual and group control).



White, Item No. 4033 000 922 0

Black, Item No. 4033 000 922 1

Highlights

- 5-channel handheld transmitter
- Threshold values can be easily set on handheld transmitter
- Easy programming thanks to textual support
- Large, well-arranged display
- Individual, group and central control

Key Features

Pre-set control

Minimum installation effort thanks to pre-set time, date and threshold values

Large display

User-friendly operation thanks to text-oriented programming

Threshold settings

The wind-threshold value can easily be set and adjusted in the transmitter
Sun protection system is protected from too strong wind loading
High level of comfort thanks to automatic shading in the event of strong sunlight

Shading periods

Adjustment of the shading periods in accordance with individual needs such as the shading of shop windows

Intermediate positions

Added comfort thanks to easy manual or automatic adjustment of two individual intermediate positions

Automatic summertime/wintertime adjustment

Clock readjustment is not necessary

Individual, group and central control

Can be used to control up to 5 individual receivers, receiver-groups or used as a central control for all receivers/receiver-groups

Smudge-proof inlay to note channel assignment

Inlay card beneath transparent cover provides space to assign individual channels
Labelling templates can be downloaded from the Internet

Wall holder

Wall holder to house transmitter when not in use

State-of-the-art radio technology with interference-immune radio frequency

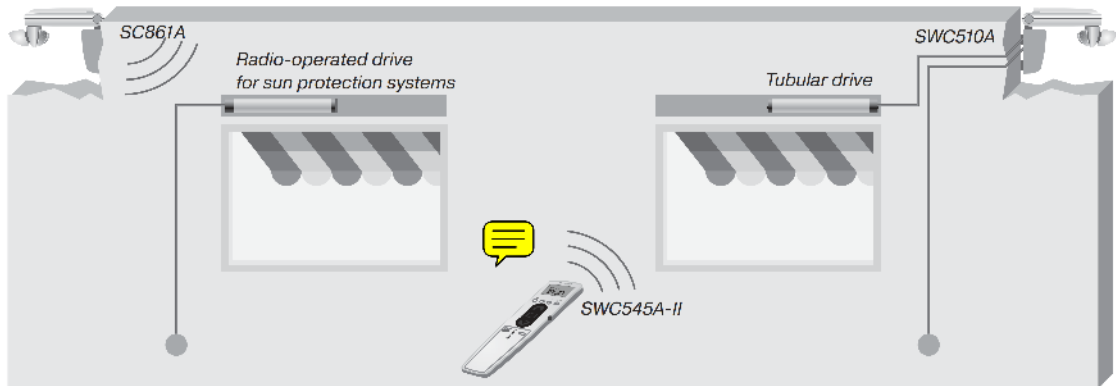
Large operating range
Interference-immune operation in living areas

Technical data

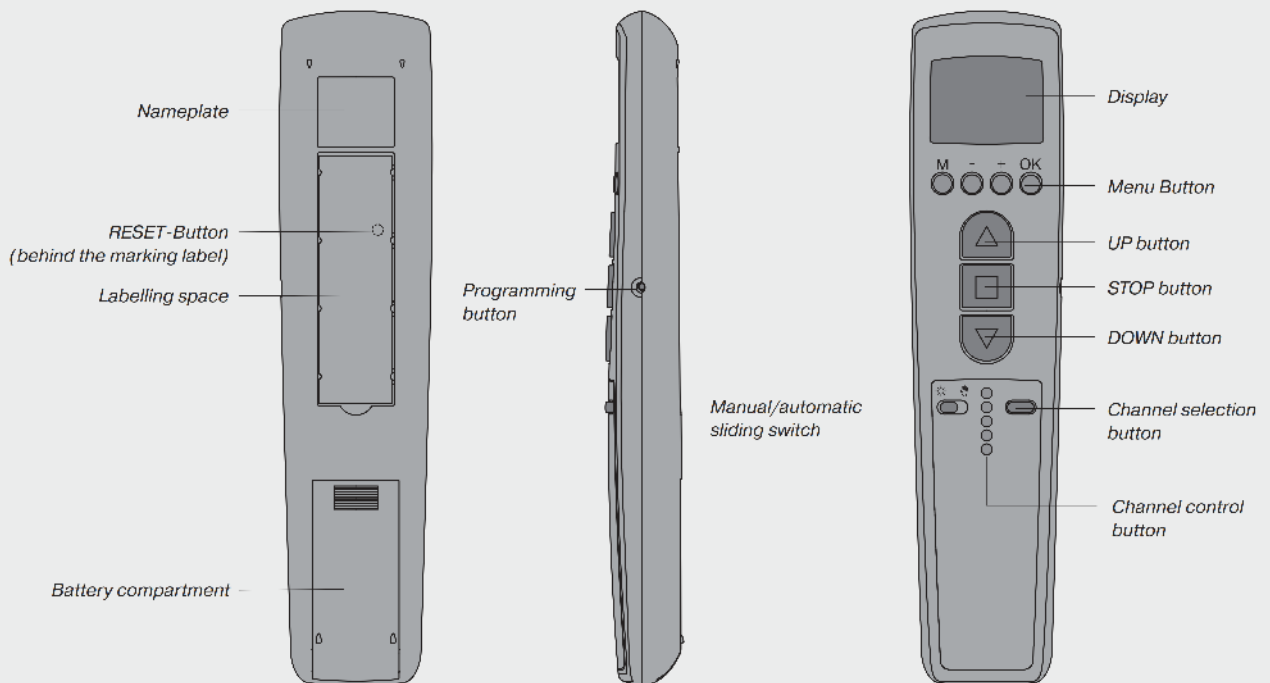
Nominal voltage	3 V DC
Battery type	LR03 (AAA)
Protection class	IP 20
Permissible ambient temperature	- 10 to +55 °C
Radio frequency	915,3 MHz
Colour	white/black



Functional principle - Example of electrical connection



Bedienung



It's that easy!

You decide when there is shade! With the switching time you set how long your sun protection automation is switched-off respectively how long your sun protection shall be driven out (e.g., for the protection of what is displayed in your shop windows). The blocking time prevents a too-early driving out respectively a too-late driving in of the sun protection system.